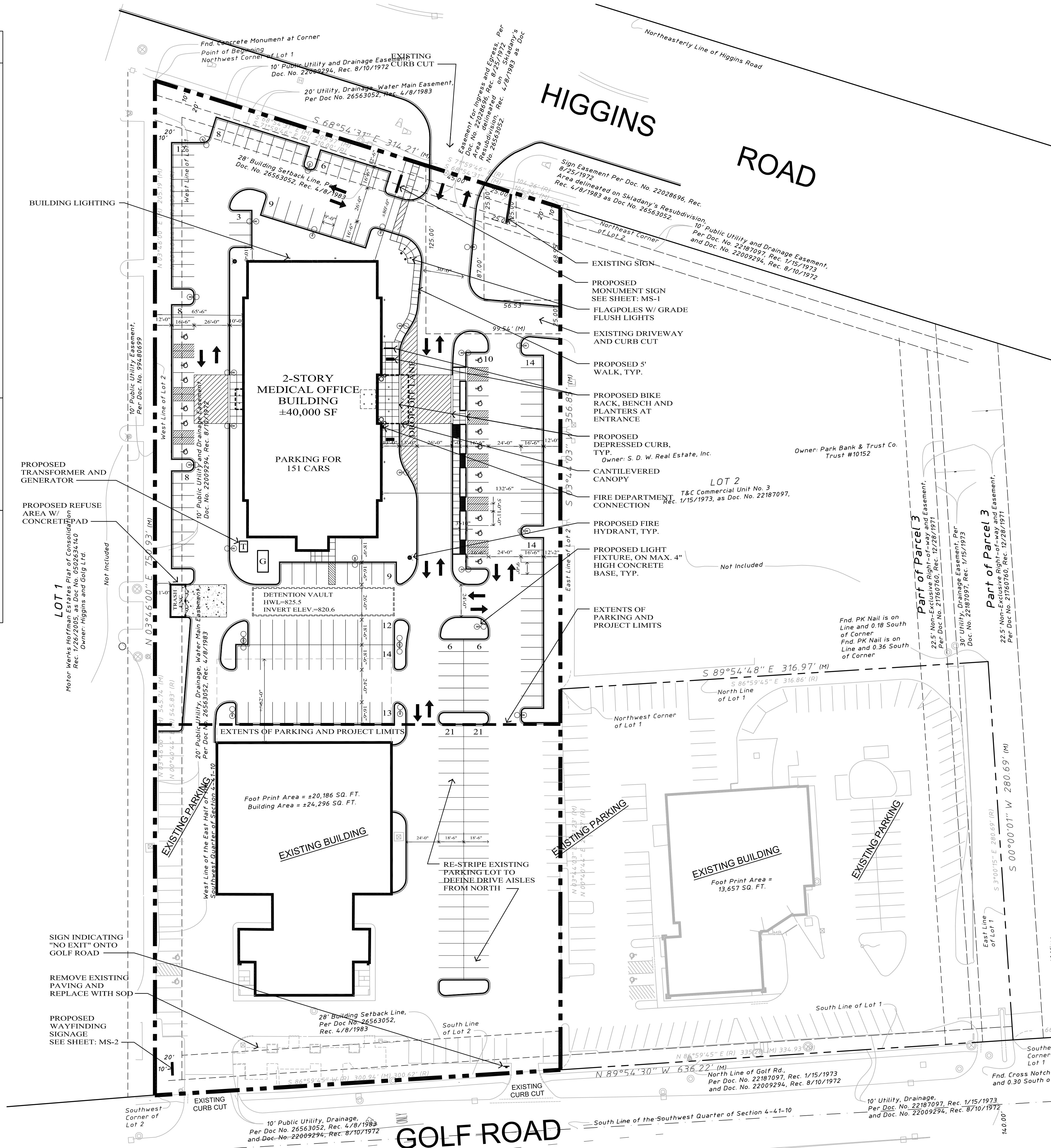


PROJECT DATA

LOT AREA:	±4.78 ACRES	
GROSS BUILDING AREA:		
FIRST FLOOR:	±20,402 SQ. FT.	
SECOND FLOOR:	±19,559 SQ. FT.	
TOTAL:	±39,961 SQ. FT.	
NET FLOOR AREA*:		
FIRST FLOOR:	±12,780 SQ. FT.	
SECOND FLOOR:	±14,940 SQ. FT.	
TOTAL:	±27,720 SQ. FT.	
REQUIRED PARKING:		
MEDICAL OFFICE:	139 STALLS	
(5/1,000 sf NFA)		
PROVIDED PARKING:		
STANDARD	135 STALLS	
HANDICAPPED	16 STALLS	
TOTAL	151 STALLS	
FAR:		
MEDICAL OFFICE SITE ONLY	39,961 SF / 128,882 SF = 31.0% FAR	
ENTIRE SITE DEVELOPMENT	71,737 SF / 208,405 SF = 30.8% FAR	
LOT COVERAGE:		
MEDICAL OFFICE SITE ONLY	20,596 SF / 128,882 SF = 16.0%	
ENTIRE SITE DEVELOPMENT	40,786 SF / 208,405 SF = 19.6%	

*Note: Net Floor Area calculations are based off of the building area defined by the Village Code as Net Floor Area. All areas are approximate at this time.



18645 South West Creek Drive
 Tinley Park, Illinois 60477
 708-342-1250 ph.
 708-342-1240 fx.
 arete3.com

PROPOSED SITE PLAN

PREPARED FOR:
BARRINGTON ORTHOPEDIC SPECIALISTS MEDICAL OFFICE BUILDING

929 WEST HIGGINS RD.
 SCHAUMBURG, IL

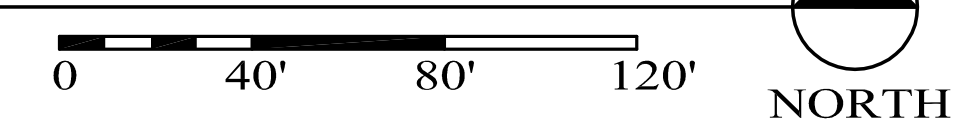
FOR:
 920 West Golf Road, LLC
 1030 W Higgins Road
 Suite 200
 Hoffman Estates, IL 60169

SP-1

JOB #: 09063
 ORIGIN: 09-03-09
 REV. DATE: 11-02-09
 SCALE: AS NOTED
 © COPYRIGHT 2009 ARETE' 3 LTD.
 ALL RIGHTS RESERVED

PROPOSED SITE PLAN

SCALE: 1" = 40'-0"
 SURVEY PREPARED BY: HAEGER ENGINEERING LLC
 DATED: SEPTEMBER 21, 2007



1:200909063_DWG SHEET DESIGN 09063_SP1.dwg